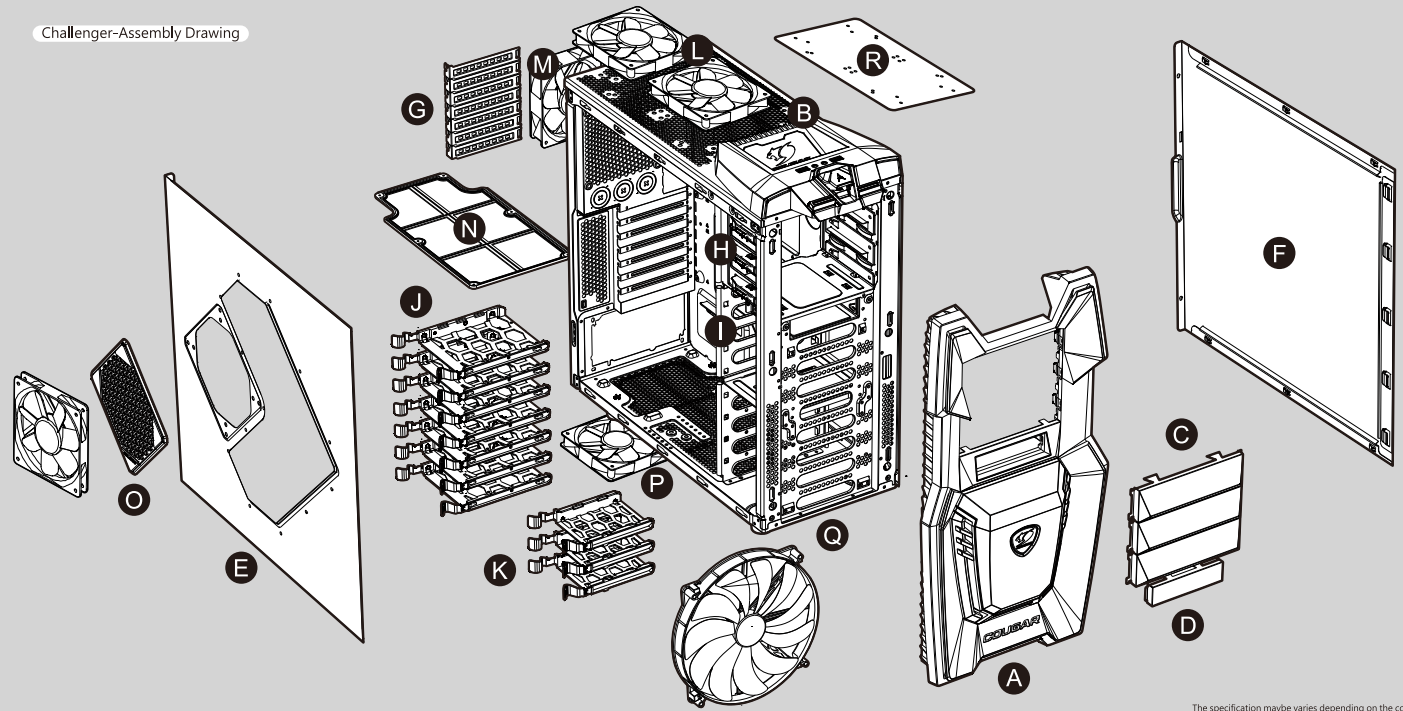


Challenger-Assembly Drawing



The specification maybe varies depending on the country or region

### Features

- Innovative & revolutionary UI design takes inspiration from the pilot unlock missile cover then fire!
- Interior black painting.
- Advanced two USB3.0 ports for maximum data transfer speed and compatible for non-USB3.0 function's motherboard.
- Top access external 3.5" & 2.5" HDD/SSD hot-swap for easy mobile data transfer.
- Support for 7 fans: front 120mm fans x 2 / 140mm fans x 2 / 200mm fan x 1, top 120mm fans x 2 / 140mm fans x 2 / 180mm fan x 1 / 200mm fan x 1, bottom 120mm fan x 1 / 140mm fan x 1, rear 120mm fan x 1, side 120mm fan x 1 / 140mm fan x 1
- Front COUGAR 200mm red LED fan x 1 and rear COUGAR Turbine 120mm fan x 1 are pre-installed.
- Acrylic side panel.
- Support for longer high-end graphics cards up to 300mm, 330mm & 410mm.(depending on varies graphics cards requirement to change position with HDD bracket)
- 7 PCI slots provides flexibility for multiple graphics cards solutions.
- Screw-less mechanisms on 5.25" devices.
- 3.5" HDD trays x 7 compatible for installing 2.5" HDDs/SSDs x 7.
- Provide 2.5" HDD trays x 3 (in the accessory kit) to install depending on the graphics cards length.
- Holes x 3 on the rear panel for water cooling solutions. (with rubber protection)
- Installation opening in the MB tray for easy upgrade CPU cooler.
- Cable feedthrough on the MB tray for easy routing and hiding cables.
- Vented slot bezels for better cooling performance.
- Air filter on the bottom cover & side cover to prevent dust from entering the enclosure. (magnet filters are easy to uninstall and clean)

### Accessory Kit

		for fan (front panel)	x4
		for HDD & main board & PSU	x16
		for ODD/FDD/card reader	x6
		for installing 2.5" HDDs/SSDs on the 3.5" HDD tray	x16
		for main board foothold	x2
		for main board foothold	x3
		2.5" HDD trays	x3
		Magnet side fan filter	x1

### Assembly Drawing

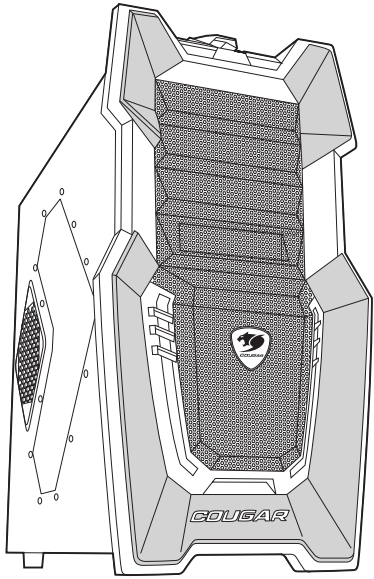
- A** Front panel removable to easily install external 5.25" & 3.5" devices.
- B** Top access external 3.5" & 2.5" HDD/SSD hot-swap for easy mobile data transfer.
- C** Mesh intake design 5.25" shields.
- D** Mesh intake design 3.5" shield.
- E** Left side panel can install 120mm fan x 1 / 140mm fan x 1, included acrylic side cover.
- F** Right side panel removable to easily manage cables behind the MB tray.
- G** Vented slot bezels for better cooling performance.
- H** 5.25" Screw-less devices x 3.
- I** HDD bracket can change position depending on varies graphics cards requirement.
- J** 3.5" HDD trays x 7 compatible for installing 2.5" HDDs / SSDs x 7.
- K** Provide 2.5" HDD trays x 3 (in the accessory kit) to install depending on the graphics cards length.
- L** Top panel can install 120mm fans x 2 / 140mm fans x 2 / 180mm fan x 1 / 200mm x 1. (optional)
- M** Rear panel can install 120mm fan x 1. (pre-installed COUGAR Turbine 120mm fan x 1)
- N** Magnet bottom fan filter is easy to uninstall and clean.
- O** Magnet side fan filter is easy to uninstall and clean.
- P** Bottom panel can install 120mm fan x 1 / 140mm fan x 1. (optional)
- Q** Front panel can install 120mm fans x 2 / 140mm fans x 2 / 200mm fan x 1. (pre-install COUGAR red LED 200mm fan x 1)
- R** Top panel fan filter can prevent dust from entering the enclosure.

Case Type	Middle Tower	
Motherboard Type	Micro ATX / ATX	
Dimension	268(W)x514(H)x523(D)	
5.25" Drive Bay	3 Exposed	
3.5" Drive Bay	1 Exposed & 7 Hidden	
2.5" Drive Bay	3 Hidden ( converted from 3.5" drive bays )	
External 3.5" & 2.5" HDD/SSD Hot-swap	1	
Maximum 3.5" HDDs Installed Quantity	9	
Maximum 2.5" HDDs / SSDs Installed Quantity	8	
I/O Panel	USB3.0 x 2 ( internal ), Mic x 1, Audio x 1	
Cooling System	Max Installed : 7pcs Fans	
	Front	120mm Fans x 2 / 140mm Fans x 2 / 200mm Fan x 1
	Top	120mm Fans x 2 / 140mm Fans x 2 / 180mm Fan x 1 / 200mm Fan x 1
	Rear	120mm Fan x 1
	Bottom	120mm Fan x 1 / 140mm Fan x 1
	Left Side	120mm Fan x 1 / 140mm Fan x 1
COUGAR 200mm Red LED Fan (front)	1 ( pre-installed )	
COUGAR 120mm Turbine Fan (rear)	1 ( pre-installed )	
Expansion Slots	7	
Maximum Graphics Cards Length	410mm	
Power Supply	Standard ATX PS2 ( optional )	

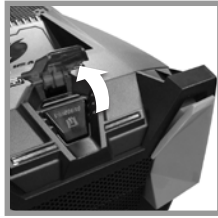
The specification maybe varies depending on the country or region

# Challenger

Midi Tower



### How to turn on the power



1. Connect the Power Switch to the motherboard.
2. Lift the missile cover by gently.

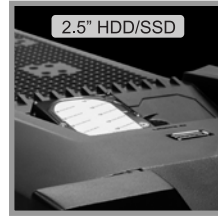


3. Press the power button to start your gaming mission.

### How to install the storage device on the external 3.5" & 2.5" HDD/SSD hot-swap



- You can easily install 3.5" HDD or 2.5" HDD/SSD on the top access external dock.



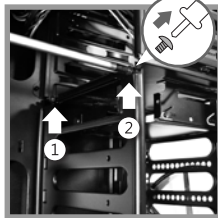
- How to use the hot-swap feature of the external docking:
1. Make sure to install all related drivers that come with your motherboard.
  2. Connect the SATA cable to SATA connector on the motherboard.
  3. Connect the power cable to power supply.
- If your hot-swap device has no function after installation, please refer to the following settings.
1. Turn on the AHCI function in the BIOS to activate the hot-swap feature.
  2. Reinstall your computer operating system.

### USB3.0 connector compatible for non-USB3.0 function's motherboard

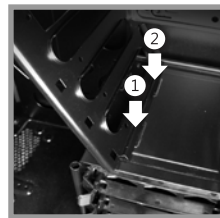


- Notice: Use the USB2.0 connector without USB3.0 transfer speed.

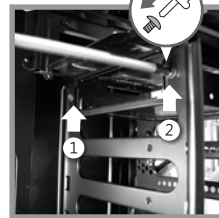
### How to change the position with HDD bracket due to graphics cards requirement



1. Unscrew the screws on the HDD bracket.
2. Dismantle the HDD bracket.

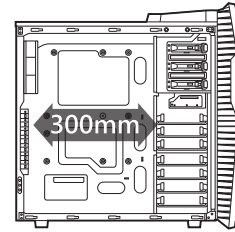


3. Insert the HDD bracket pin into the HDD cage opening.

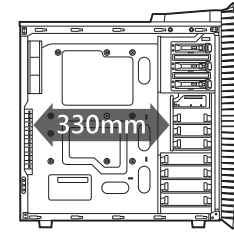


4. Attach the bracket.

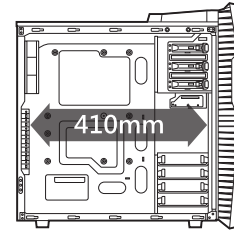
### Challenger has three modes to satisfy with your graphics cards length



- A-Mode**  
Maximum graphics cards length : 300mm

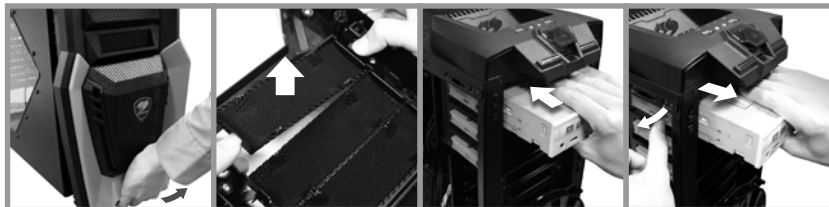


- B-Mode**  
Maximum graphics cards length : 330mm



- C-Mode**  
Maximum graphics cards length : 410mm

### How to install the external 5.25" device



1. Remove the front panel by gently.
2. Remove the 5.25" shield.
3. Slide the optical drive into the 5.25" drive bay, it will be locked automatically.
4. Pull the screw-less grip to remove the optical drive.

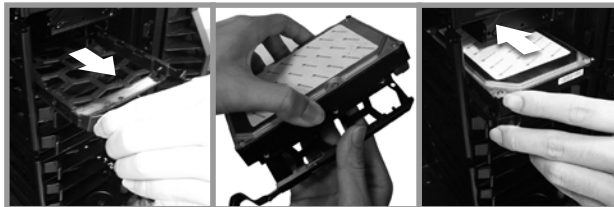
### How to install the external 3.5" device



1. Remove the front panel by gently.
2. Remove the 3.5" shield.
3. Slide the 3.5" device into the 3.5" drive bay.
4. Attach the 3.5" device to the bay from both side.

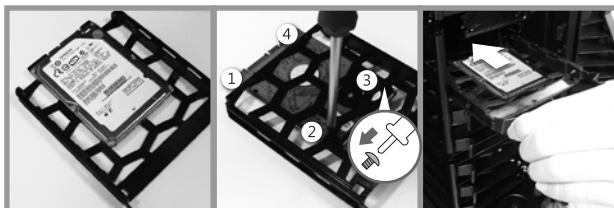
### A-Mode

#### How to install the internal 3.5" HDD on the 3.5" HDD tray



1. Remove the 3.5" HDD tray.
2. Place an 3.5" HDD into the 3.5" HDD tray. (connectors pointing backwards)
3. Slide the 3.5" HDD tray into the HDD cage until it locks.

#### How to install the internal 2.5" HDD on the 3.5" HDD tray



1. Place an 2.5" HDD / SSD into the 3.5" HDD tray. (connectors pointing backwards)
2. Attach the 2.5" HDD to the 3.5" HDD tray from below.
3. Slide the 3.5" HDD tray into the HDD cage until it locks.

### B-Mode

#### How to install the internal 2.5" HDD on the 2.5" HDD tray



1. Remove the 2.5" HDD tray.
2. Place an 2.5" HDD / SSD into the 2.5" HDD tray. (connectors pointing backwards)
3. Slide the 2.5" HDD tray into the HDD cage until it locks.

#### How to install the internal 3.5" HDD on the exposed 3.5" drive bay



- Place an 3.5" HDD into the external 3.5" drive bays, and attach the 3.5" HDD to the bay from both sides.