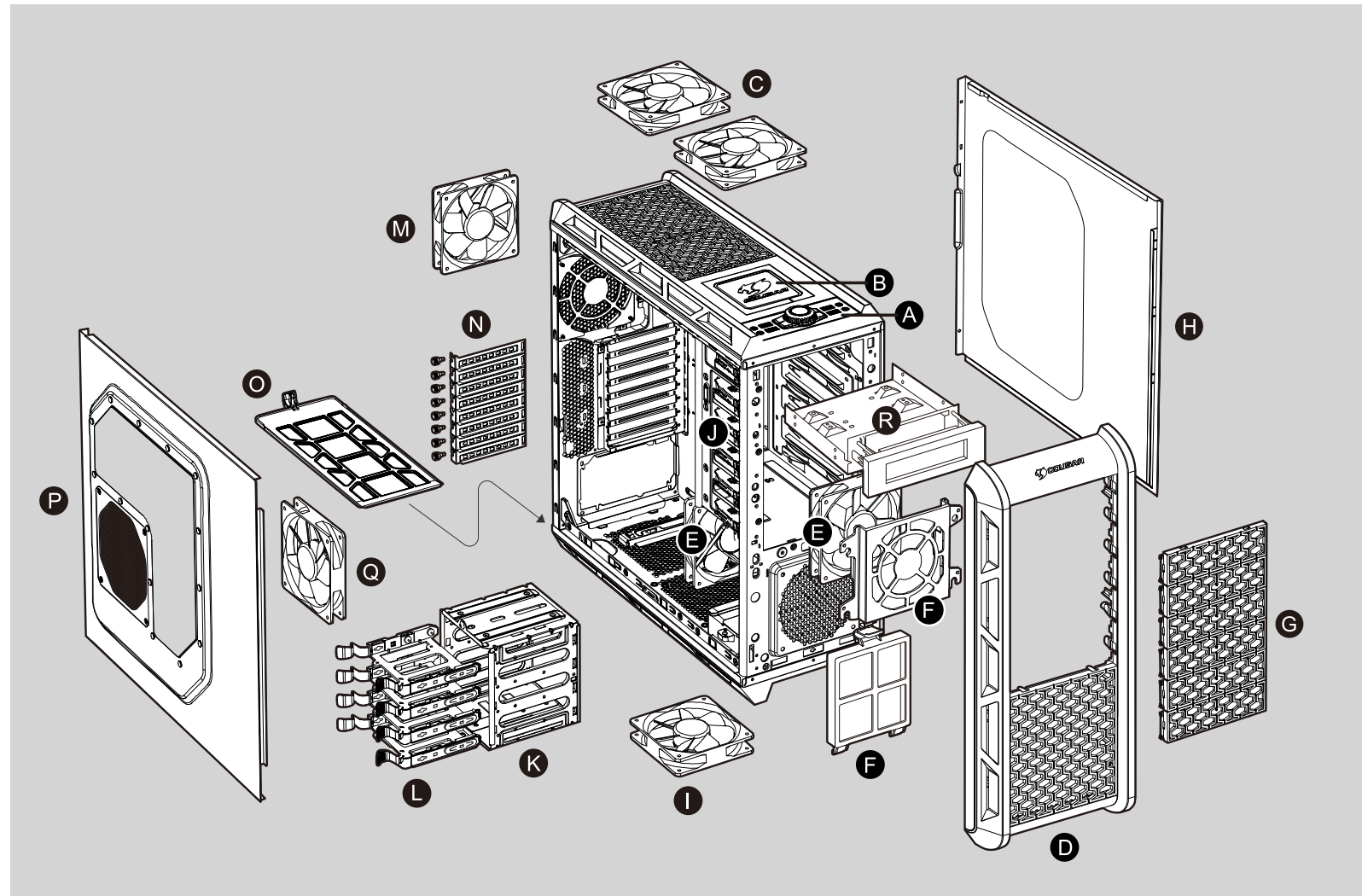




### Features

- Innovative & Integrated UI for user friendly design
- Advanced two USB 3.0 ports for maximum data transfer speed
- Unique honeycomb & mesh hybrid intake design with rugged strong appearance
- Top access external 3.5" & 2.5" HDD/SSD for easy mobile data transfer
- Integrated fan speed controller for dual-way fan control
- Support for 7 fans: front 120mm fan x2; rear 120mm fan x1; top 120mm fan x 2; bottom 140/120mm fan x1; left-side panel 140mm fan x1
- Support for very long graphics cards (up to 12" / 305mm)
- Eight PCI slots provides flexibility for multiple graphics cards solutions
- Top-notch screw-less mechanisms on all disk drive bays
- Shockproof HDD tray design for 3.5" HDD and compatible for 2.5" HDD/SSD
- Holes with covers for liquid cooling solutions
- Retaining holes in the motherboard tray for easy accessing the backplate of the CPU cooler
- Cable routing holes on the motherboard tray for easy routing and hiding cables behind the MB tray
- Vented slot covers for better cooling performance
- Air filter for the power supply fan
- Black thumb screws to easily fasten expansion cards

Case Type	Full Tower	
Dimension (W / H / D)	223 (W) x 523 (D) x 514 (H) mm	
Motherboards	ATX / Micro ATX	
5.25" Drive Bay	6 Exposed	
3.5" Drive Bay	4 Hidden 1 Exposed (optional) Converted from one 5.25" drive bay	
Hot swap bay	3.5"/2.5" x 1	
Expansion Slots	8	
I/O Panel	USB 3.0 x 2 USB 2.0 x 2	MIC x 1 HD Audio x 1
Cooling System	Front: 120mm fan x 2 (optional) (1 converted from 5.25" drive bays) Top: 120mm fan x 2 (optional) Rear: 120mm fan x 1 (optional) Bottom: 140mm fan x 1 (optional) (can be swap to 120mm fan x 1) Side: 140mm fan x 1 (optional)	
Side Panel	Transparent window	
PSU	Standard ATX PS2 (optional)	
Maximum Compatibility	CPU cooler height limitation: 180mm Graphics cards length limitation: 305mm	



**A** Innovative & Integrated UI for user friendly design, including USB3.0x2/USB2.0x2/audio/mic, dual way fan control system can quickly adjust cooling performance & noise level

**B** Top access external 3.5" & 2.5" HDD/SSD for easy mobile data transfer

**C** 120mm fan x 2 for top cover (optional), can rapidly exhaust the hot air, keep the inner temperature cool

**D** Front panel, removable to easily install 5.25" devices

**E** 120mm fan x 2 for front panel (optional), effectively cool the HDD & graphics cards

**F** Front fan filters to prevent dust into the chassis

**G** 5.25" honeycomb mesh cover

**H** Right side panel, easily upgrade your hardware system

**I** 140/120mm fan for bottom panel (optional), enhance the overall cooling performance

**J** Six tool-less 5.25" drive bays, provide plenty of expansion

**K** Removable 3.5" HDD & 2.5" HDD/SSD cage for easily install front fan

**L** Shockproof HDD tray design for 3.5" HDD and compatible for 2.5" HDD/SSD

**M** 120mm fan for rear cover (optional), can rapidly exhaust the hot air, keep the inner temperature cool

**N** Eight PCI slots provides flexibility for multiple graphics cards solutions





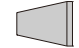



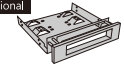

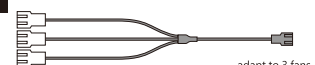
**O** Removable air filter for bottom panel, easily clean & wash

**P** Left side cover with transparent window & 140mm fan intake design

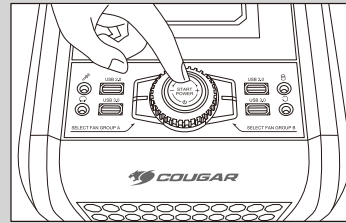
**Q** 140mm fan for side cover (optional), effectively cool the graphics cards

**R** 5.25" to 3.5" conversion kit (optional)

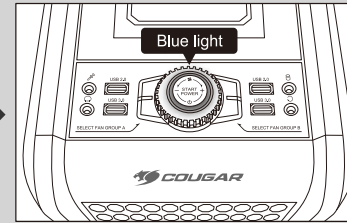
## Accessory Kit

	x3		x12
for cable management		for ODD/FDD/card reader	
	x2		x20
for cooling water hole		for HDD & main board	
	x2		x8
for main board foothold		for fan	
	x6		x1
for PSU & main board		for main board position	
	x1		x12
optional 5.25" to 3.5" conversion kit		for main board foothold	
	x2		
optional adapt to 3 fans			

## Start Power

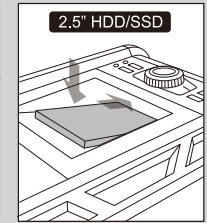
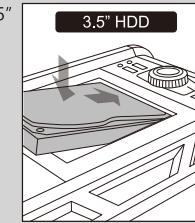


Push the "START POWER"



The blue LED lights when PC power on

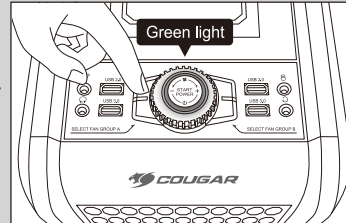
External 3.5" & 2.5" HDD/SSD dock



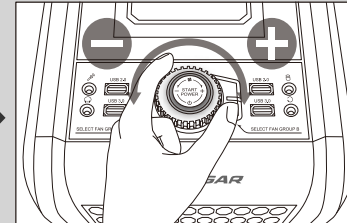
You can easily install 3.5" HDD or 2.5" HDD/SSD in the top access external dock

## Dual-way fan control system

There are two fan control buttons to control two group of fans independently (fan group A & fan group B)



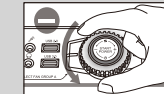
Push fan switch button, it will switch to fan control mode, the green LED lights



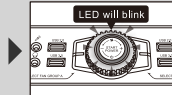
Rotate the fan control button to adjust the fan speed clockwise: faster / counterclockwise: slower



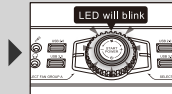
Clockwise: faster & brighter



Counterclockwise: slower & dimmer



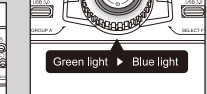
when it reaches max. fan speed, LED will blink



when it reaches min. fan speed, LED will blink



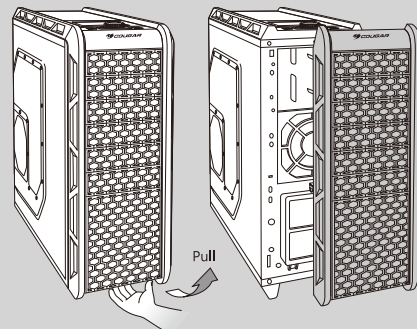
Standby 8secs



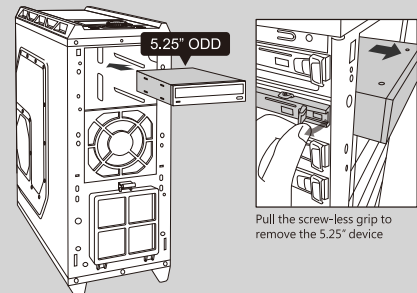
If we stop using fan control it will return to blue LED light

## How to install the 5.25" devices.

- 1 Remove the front panel

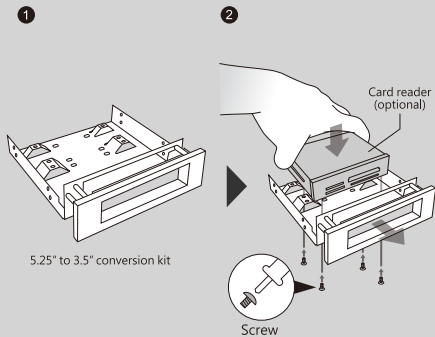


- 2 Insert the device into 5.25" drive bay it will be locked automatically



Pull the screw-less grip to remove the 5.25" device

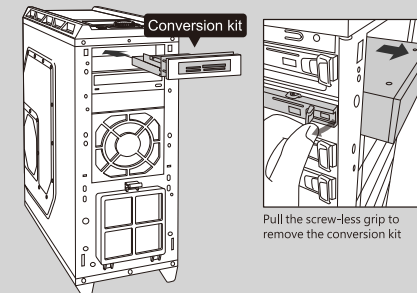
## How to install the 5.25" to 3.5" conversion kit (optional)



5.25" to 3.5" conversion kit

Screw

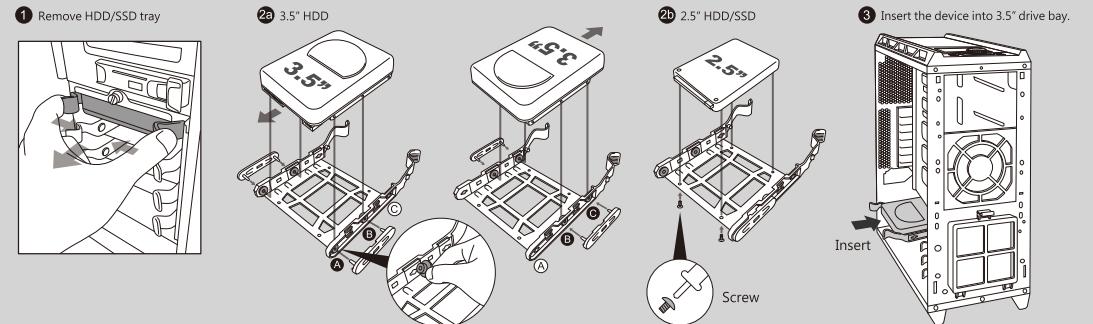
- 3 Insert the conversion kit into 5.25" case



Conversion kit

Pull the screw-less grip to remove the conversion kit

## How to install the 3.5" & 2.5" HDD/SSD



## How to install the Fan

